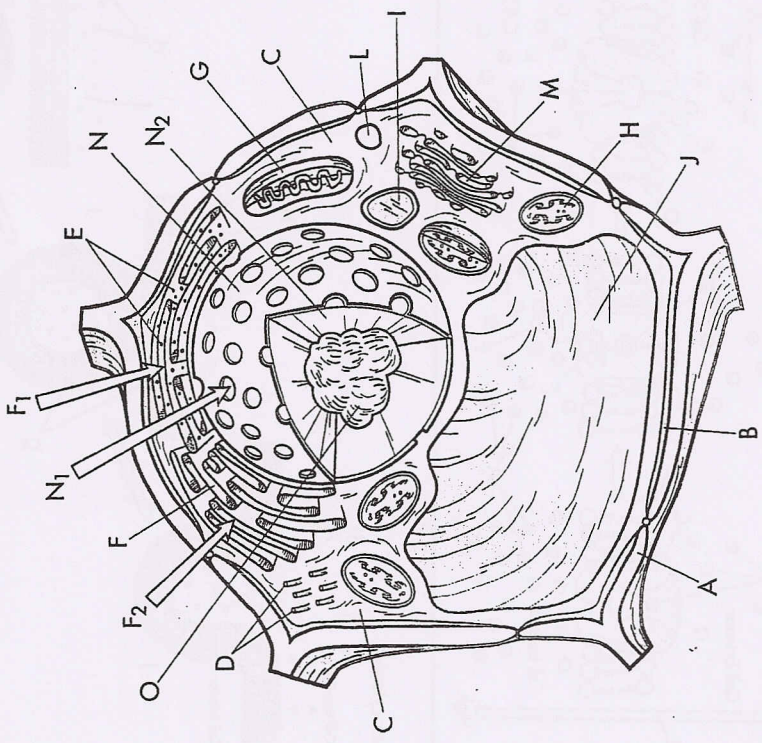


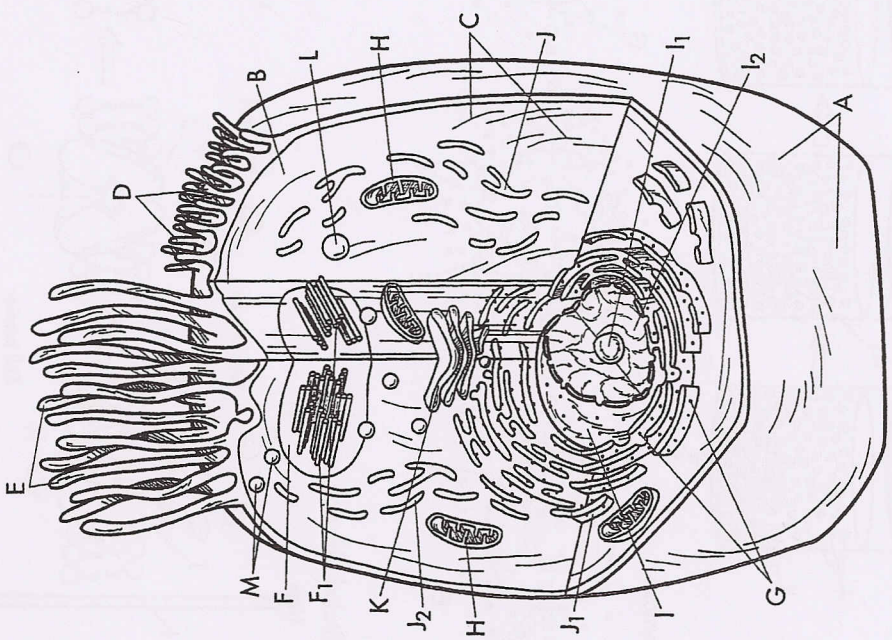
The Plant Cell



The Plant Cell

- Cell WallA
- Cell MembraneB
- CytoplasmC
- CytoskeletonD
- RibosomesE
- Endoplasmic ReticulumF
- Rough ERF₁
- Smooth ERF₂
- MitochondrionG
- ChloroplastH
- VacuoleJ
- NucleusM
- Golgi BodyN
- NucleolusO
- LysosomeL

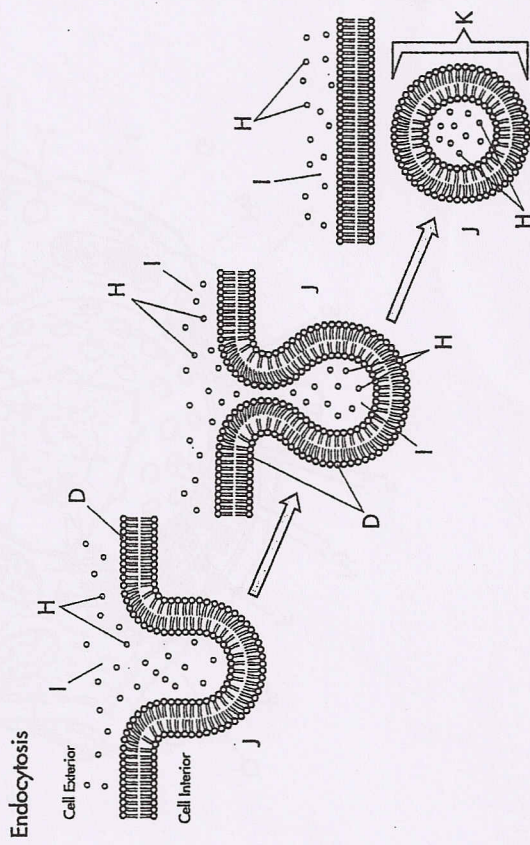
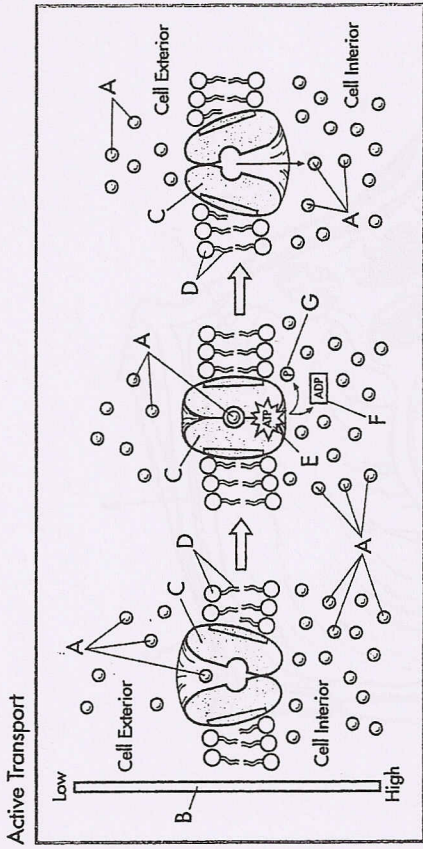
The Animal Cell



The Animal Cell

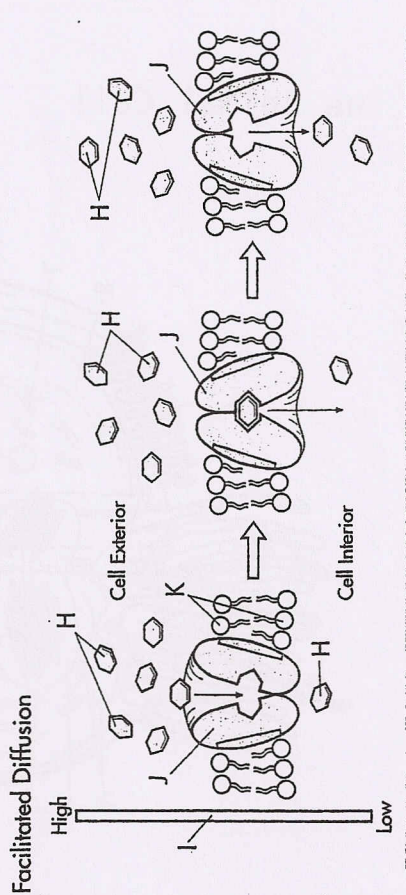
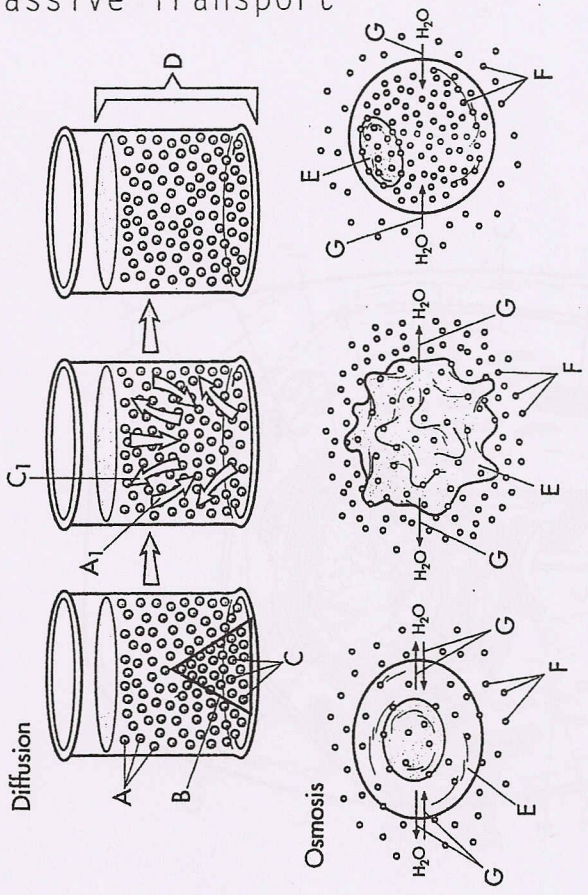
- Cell MembraneA
- CentriolesB
- Cytosol (Cytoplasm)C
- CytoskeletonD
- CiliaE
- Endoplasmic ReticulumF
- Rough ERG
- Smooth ERH
- MitochondrionI
- NucleusI₁
- NucleolusI₂
- LysosomeL
- Golgi BodyK
- VacuoleJ
- RibosomesJ₁
- Smooth ERJ₂
- MitochondrionJ₁
- Golgi BodyJ₂
- NucleolusI₁
- NucleusI₂
- LysosomeL

Active Transport and Endocytosis



- Active Transport and Endocytosis**
- Amino Acids A
 - ATP Molecule E
 - Concentration Gradient B
 - Transport Protein C
 - Cell Membrane D
 - Extracellular Fluid I
 - Cell Cytoplasm J
 - Vesicle K

Passive Transport



- Passive Transport**
- Water Molecules A
 - Movement of Water Molecules B
 - Movement of Crystal Molecules C
 - Mixed Water and Crystal Molecules D
 - Red Blood Cell E
 - Water F
 - Movement of Water G
 - Carbohydrates H
 - Concentration Gradient I
 - Transport Protein J
 - Cell Membrane K